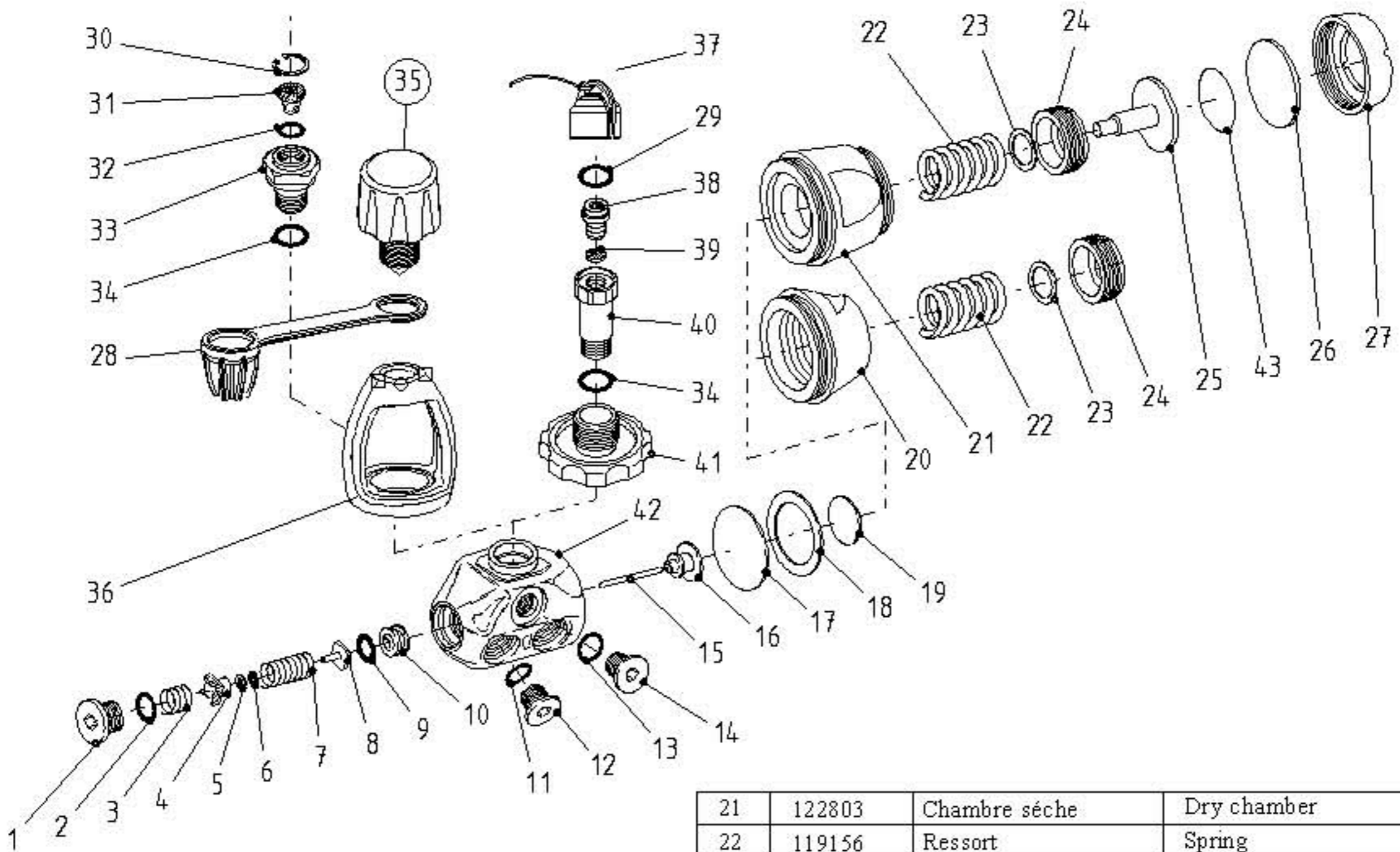


Utiliser graisse 02 MCG 111  
USE O2 GREASE MCG 111

COUPLE DE SERRAGE / TORQUE	
ref. P/N	valeur / value
122209/122208	0.2M.Kg
122318	0.5M.Kg
122309	2.5M.Kg
122239	0.5M.Kg
122210/122803	2.5M.Kg
120140	2.5M.Kg



21	122803	Chambre sèche	Dry chamber
22	119156	Ressort	Spring
23	H45097	Rondelle	Washer
24	122805	Vis de réglage	Adjustment screw
25	122801	Piston	Piston
26	122804	Membrane	Diaphragm
27	122802	Ecrou membrane	Diaphragm retainer
28	124555	Bouchon d'étrier	Dust cap
29	124709	Bague	O ring
30	H63051	Circlips	Circlips
31	121139	Filtre	Filter
32	124702	Bague	O ring
33	120140	Siège	Inlet fitting
34	213716	Bague	O ring
35	124149	Vis d'étrier	Yoke screw
36	124611	Etrier	Yoke
37	124665	Bouchon Din	Din plug
38	122318	Siege Din 300B	300B din fitting
39	113616	Filtre	Filter
40	122309	Porte siège	Din fitting holder
41	122306	Volant din	Din handwheel
42	122203	Corps HP	HP body
43	124545	Sticker	Sticker

1	122239	Bouchon	Plug
2	213714	Bague	O ring
3	122243	Ressort	Spring
4	122227	Barillet	Spring block
5	119129	Bague anti extusion	Anti extrusion washer
6	124612	Bague	O ring
7	122244	Ressort	Spring
8	124624	Clapet	HP seat
9	124704	Bague	O ring
10	122224	Siege	Crown
11	124701	Bague	O ring
12	122209	Bouchon HP	HP plug
13	124703	Bague	O ring
14	122208	Bouchon MP	MP plug
15	122225	Aiguille	Pin
16	122236	Poussoir	Pin support
17	119159	Membrane	Diaphragm
18	119143	Rondelle	Washer
19	124560	Embase ressort	Spring pad
20	122210	Ecrou d'étanchéité	Body screw

Désignation	REV.	Date	REV.	Date	<b>AQUALUNG</b> <b>020012</b>	REV. E
HP Cousteau nitrox Nitrox cousteau 1st.		16/12/97	D	18/11/98		
	A	22/6/98	E	3/11/99		
	B	9/8/98	F			
	C	5/11/98	G			